

THE WISHLIST

EXPERIENCES/EXTRAVAGANCES/ECCENTRICITIES

THE WISHLIST



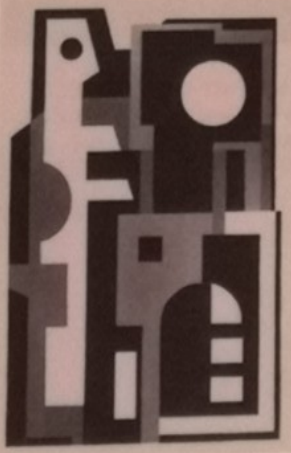
CUPBOARD LOVE

Taking inspiration from the shape of an urchin's shell, this polished brass cabinet, by Jake Phipps, is made up of 70 panels and lined in high-gloss oak with a mirror on the middle shelf. Opening at the touch of a discreet latch, this is a bold piece that perfectly marries form and function. £62,400. jakehipps.com



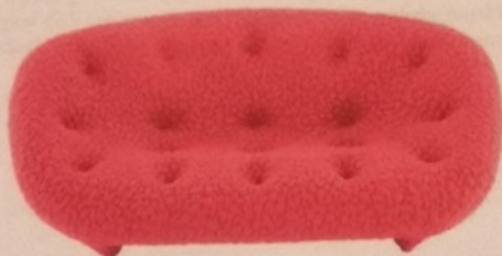
AHEAD OF THE CURVE

Created for the Royal Thai floor coverings company by Zaha Hadid Design, this stunning RE/Form carpet is an unusual marriage of turquoise, orange and reds. Created using the Axminster looming and tufting method, this is one of 22 designs in the range. POA. royalthai.com



FAIR GAME

The inaugural Connect Independent Art Fair will showcase art chosen by dealers from 34 well-established independent exhibitors, such as Cityscape by Curt Burström from Saunders Fine Art, above. Connect, 29 January-2 February at Mall Galleries, St James's. connectartfair.co.uk



SOFT LANDING

Like a big bubble of irresistible comfort, the Ploum sofa by Ligne Roset, designed by R & E Bouroullec, is in Pantone's colour of the year: coral. From £2,481. ligne-roset.com/uk/



GILT TRIP

Made from large sheets of annealed brass and "beaten, banged and bashed" into a selection of vessels, from dishes to vases and platters, the BASH range by Tom Dixon will brighten up a corner or table. From £50. tomdixon.net

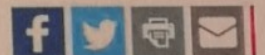


Contact us now 020 8168 0175
 hello@ecoworldlondon.com
 verdo-kewbridge.co.uk

Discover collectable works at new dealer-run co-operative art fair



Francesco Maestosi, The Sala de Saturne in the Pitti Palace, Florence.



LONDON.- *Connect – The Independent Art Fair* will be held at the Mall Galleries, a stone's throw away from Trafalgar Square and Buckingham Palace and the art hub of Mayfair & St James's, from Tuesday, 29th January until Saturday, 2nd February 2019.

The new art fair is aiming to fill the sudden gap in the fair calendar created by the absence of fairs focusing on the discerning, entry and mid-level, collector. The cooperative event has been initiated and is run by independent art dealers to connect exhibitors and art buyers and help them discover new works as well as showing long-established artists.

Matthew Hall of Panter & Hall, one of the initiators of the Fair, says: "This will be an opportunity for seasoned collectors and beginners alike to access an area of the market neglected by most other art fairs. The aim is to connect buyers with dealers not normally seen at the larger London fairs. The general idea is to introduce those many extraordinarily talented artists, from across three centuries, who for one reason or another have slipped off the radar. Consequently we expect the works, all carefully vetted by a committee of experts, to represent tremendously good value in what can sometimes seem an overinflated London art market."